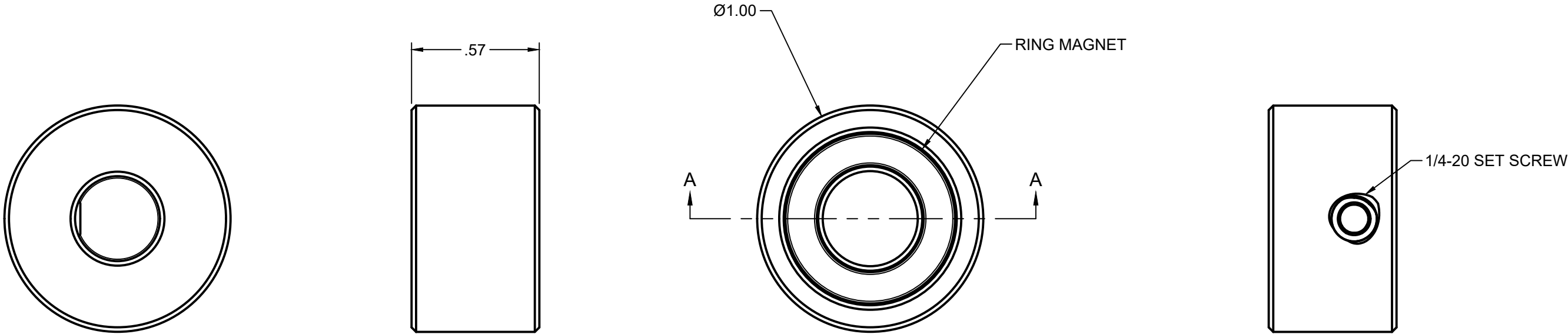
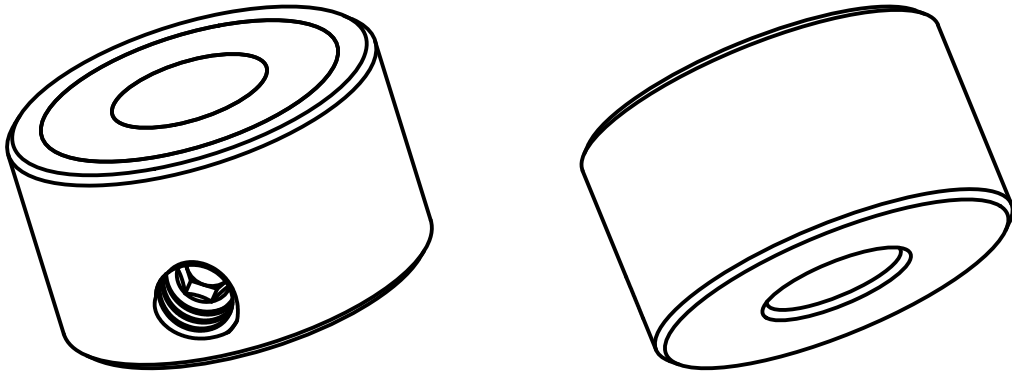
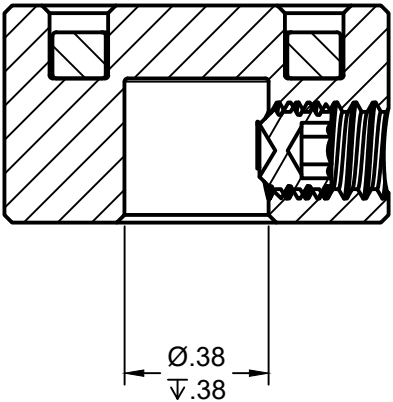


- INTERFACE DETAILS AND NOTES:
1. INTENDED FOR $\frac{3}{8}$ " SHAFT.
 2. SECURE WITH $\frac{1}{4}$ -20 SET SCREW


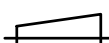
REVISION HISTORY		
REV	DESCRIPTION	DATE
0	INITIAL RELEASE	03/16/2022



SECTION A-A
SCALE 2:1



ISOMETRIC VIEWS
SCALE:NONE

CONFIDENTIAL - ALL RIGHTS RESERVED DISCLOSURE OR DUPLICATION PROHIBITED	DRAWN: T.WOLFF		DATE: 02/01/2022		<div>JORAL</div> <div>WWW.JORALLC.COM</div>		
	CHECKED: J.WARZALA		APPROVED: 02/02/2022				
	PART #: MAG-COL-0.375				DESCRIPTION: SEALED MAGNET SHAFT COLLAR 3/8IN WITH SET SCREW		SCALE: 2:1 (From parent)
	EPICOR #: 20079466		REV. 0	SIZE: B			SHEET: 1/1
UNLESS OTHERWISE SPECIFIED: DIMENSIONS ARE IN DECIMAL INCH		 					
ALL DIMENSIONS ARE REFERENCE							